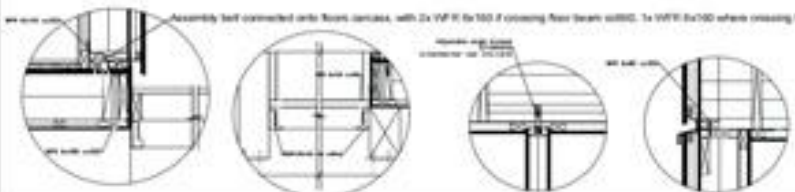
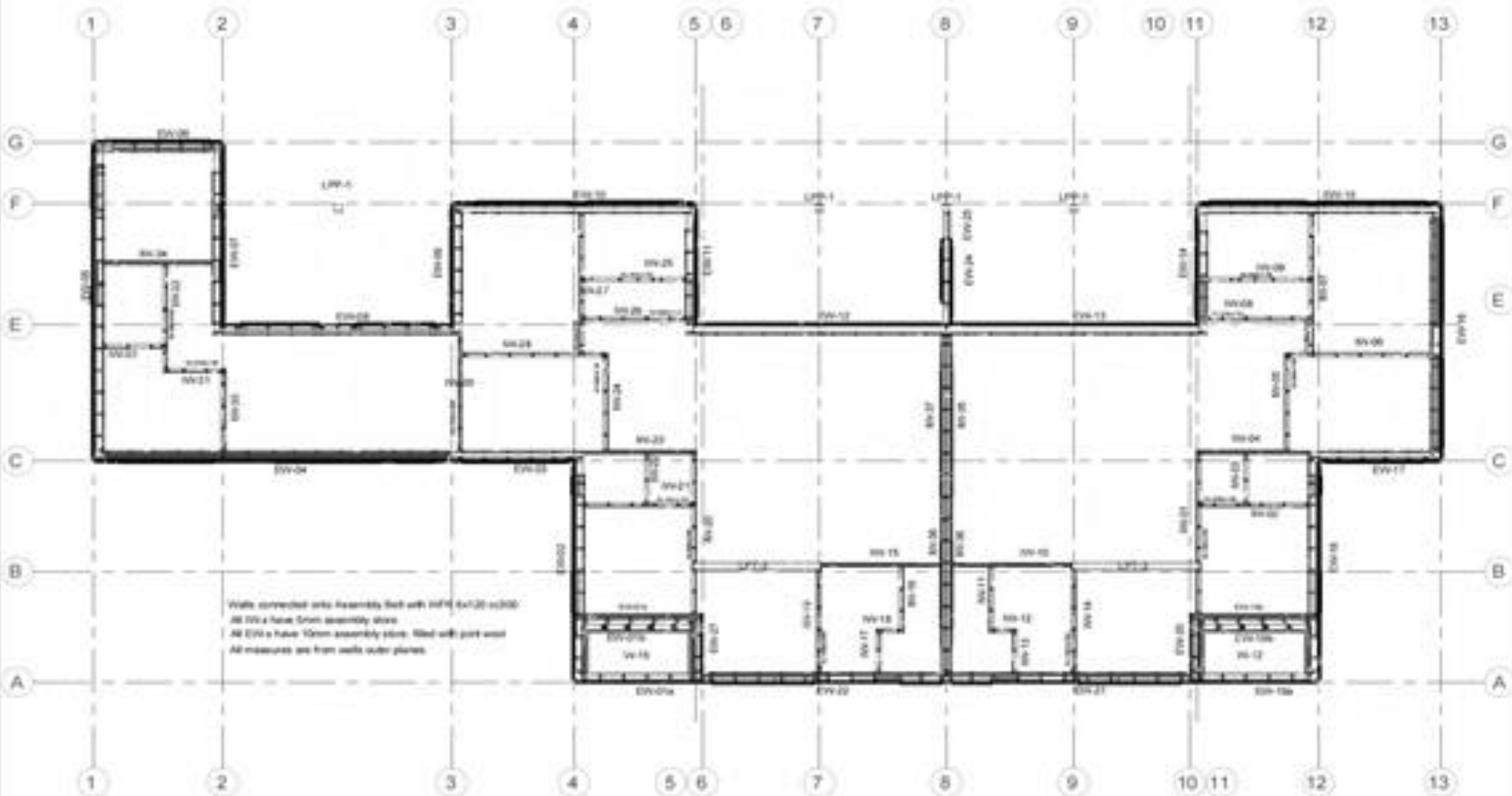
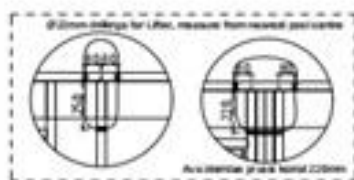
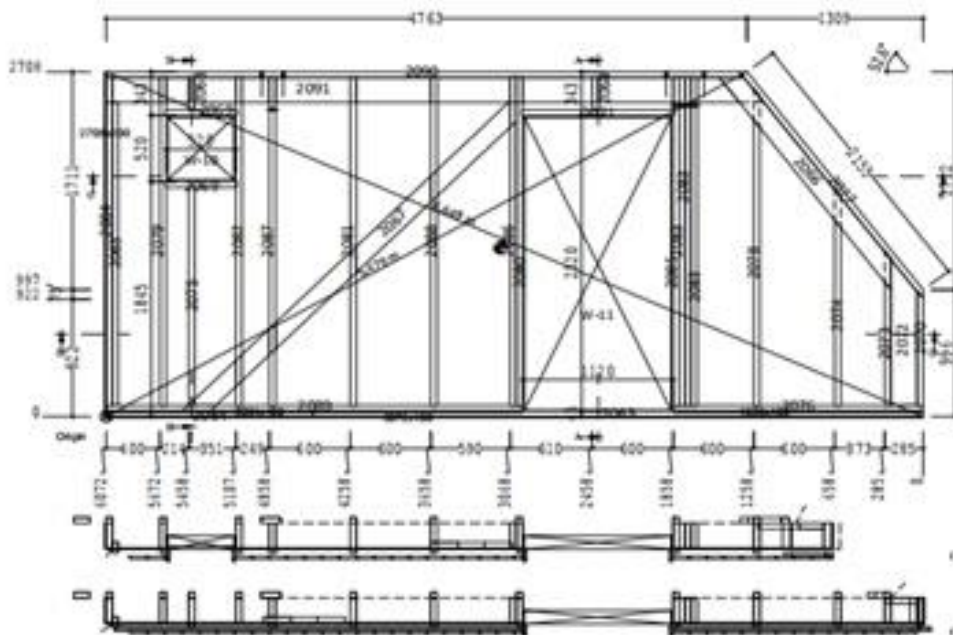


Name	Talo Kőpörlő	Verzió	007
Projekt címe	3D view from north-east	Státusz	EP
20m² Visions		Terület	AR-1-01
		Kezdet	01.01.2024
		Méret	M 1:100
		Verzió	A
		Leírás	1/1

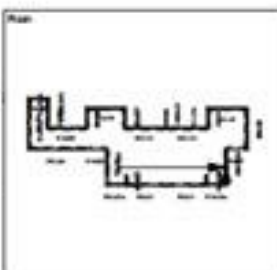


Name	Talo Kőpörlő	Verzió	007
Projekt címe	1st floor walls	Státusz	EP
20m² Visions		Terület	AR-1-01
		Kezdet	01.01.2024
		Méret	M 1:100
		Verzió	A
		Leírás	1/1



External wall - EW

- Wooden subframe 45x45 mm;
- Vapour protection layer;
- Insulation 200 mm ($\lambda = 0,035$ W/mK)
- Wooden frame 45x195 mm /
- Wind protection gypsum board 9mm;
- Wind protection membrane;
- Vertical ventilation battens 28x45mm;
- Horizontal battens 28x45mm;
- Vertical boarding UVS 23x145 mm



Vapor barrier	Wind membrane
+ 200	+ 50
+ 0	+ 100
+ 150	+ 250

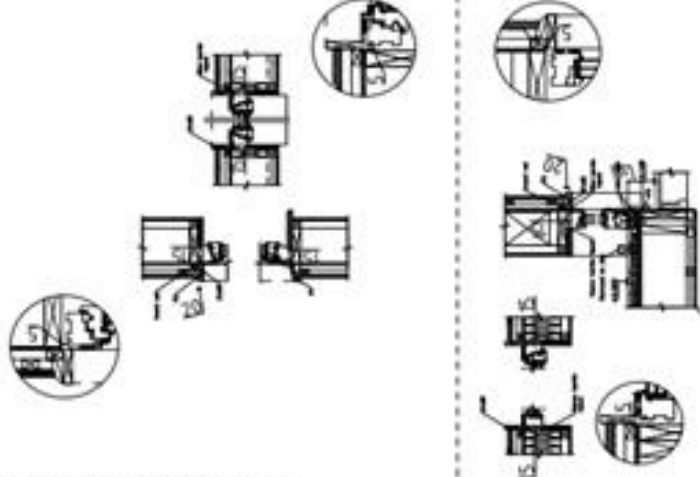
VAADE SEEST

Project: Kõõksmäe
 Project no.: 007
 Element: EW-18
 Revision: 01.01.2024

20m² Visions

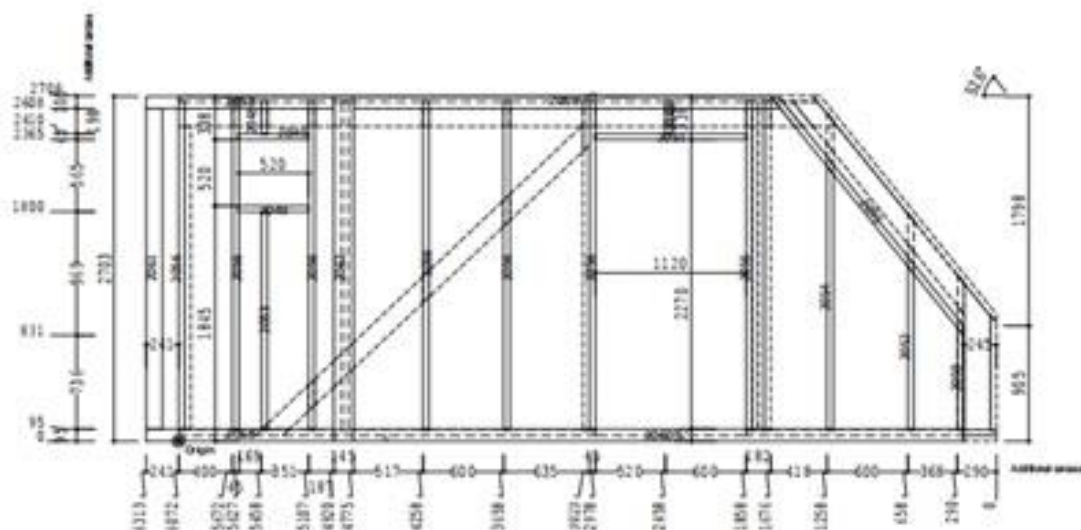
Project: Kõõksmäe
 Project no.: 007
 Element: EW-18
 Revision: 01.01.2024

20m² Visions



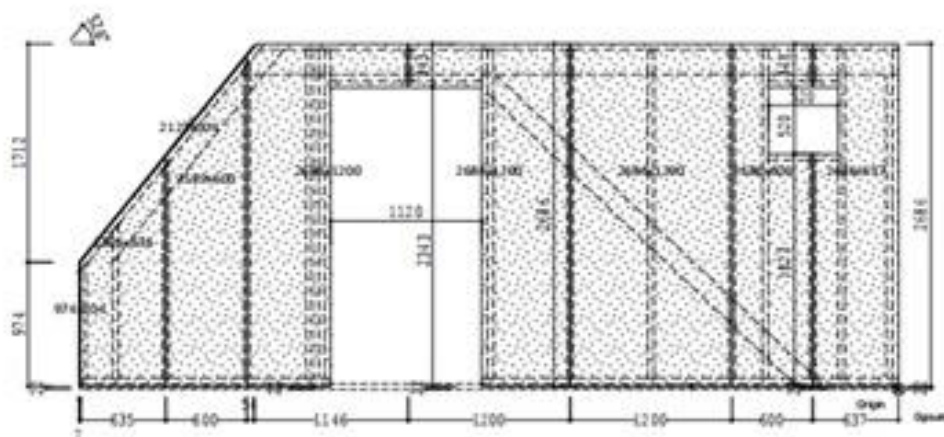
No of	Name	Unit	Quantity	Weight	Volume	Notes
2001	Background	m ²	180	1378	3.24	
2002	Assembly fast on elem.	pc	45	1537		
2003	Assembly	pc	45	4336		
2004	Assembly	pc	45	2087		
2005	Wall corner	pc	145	3463		
2006	Wall diagonal	pc	145	795		
2007	Caracas post	pc	195	243		
2008	Caracas post	pc	195	530		
2009	Caracas post	pc	195	904		
2010	Caracas post	pc	195	1130		
2011	Caracas post	pc	195	1146		
2012	Caracas post	pc	195	1218		
2013	Caracas post	pc	195	1706		
2014	Caracas post	pc	195	1720		
2015	Caracas post	pc	195	1808		
2016	Caracas post	pc	195	2498		
2017	Caracas post	pc	195	2983		
2018	Caracas post	pc	195	3283		
2019	Caracas post	pc	195	3283		
2020	Caracas post	pc	195	3283		
2021	Caracas post	pc	195	3283		
2022	Caracas post	pc	195	3283		
2023	Caracas post	pc	195	3283		
2024	Caracas post	pc	195	3283		
2025	Caracas post	pc	195	3283		
2026	Caracas post	pc	195	3283		
2027	Caracas post	pc	195	3283		
2028	Caracas post	pc	195	3283		
2029	Caracas post	pc	195	3283		
2030	Caracas post	pc	195	3283		
2031	Caracas post	pc	195	3283		
2032	Caracas post	pc	195	3283		
2033	Caracas post	pc	195	3283		
2034	Caracas post	pc	195	3283		
2035	Caracas post	pc	195	3283		
2036	Caracas post	pc	195	3283		
2037	Caracas post	pc	195	3283		
2038	Caracas post	pc	195	3283		
2039	Caracas post	pc	195	3283		
2040	Caracas post	pc	195	3283		
2041	Caracas post	pc	195	3283		
2042	Caracas post	pc	195	3283		
2043	Caracas post	pc	195	3283		
2044	Caracas post	pc	195	3283		
2045	Caracas post	pc	195	3283		
2046	Caracas post	pc	195	3283		
2047	Caracas post	pc	195	3283		
2048	Caracas post	pc	195	3283		
2049	Caracas post	pc	195	3283		
2050	Caracas post	pc	195	3283		
2051	Caracas post	pc	195	3283		
2052	Caracas post	pc	195	3283		
2053	Caracas post	pc	195	3283		
2054	Caracas post	pc	195	3283		
2055	Caracas post	pc	195	3283		
2056	Caracas post	pc	195	3283		
2057	Caracas post	pc	195	3283		
2058	Caracas post	pc	195	3283		
2059	Caracas post	pc	195	3283		
2060	Caracas post	pc	195	3283		
2061	Caracas post	pc	195	3283		
2062	Caracas post	pc	195	3283		
2063	Caracas post	pc	195	3283		
2064	Caracas post	pc	195	3283		
2065	Caracas post	pc	195	3283		
2066	Caracas post	pc	195	3283		
2067	Caracas post	pc	195	3283		
2068	Caracas post	pc	195	3283		
2069	Caracas post	pc	195	3283		
2070	Caracas post	pc	195	3283		
2071	Caracas post	pc	195	3283		
2072	Caracas post	pc	195	3283		
2073	Caracas post	pc	195	3283		
2074	Caracas post	pc	195	3283		
2075	Caracas post	pc	195	3283		
2076	Caracas post	pc	195	3283		
2077	Caracas post	pc	195	3283		
2078	Caracas post	pc	195	3283		
2079	Caracas post	pc	195	3283		
2080	Caracas post	pc	195	3283		
2081	Caracas post	pc	195	3283		
2082	Caracas post	pc	195	3283		
2083	Caracas post	pc	195	3283		
2084	Caracas post	pc	195	3283		
2085	Caracas post	pc	195	3283		
2086	Caracas post	pc	195	3283		
2087	Caracas post	pc	195	3283		
2088	Caracas post	pc	195	3283		
2089	Caracas post	pc	195	3283		
2090	Caracas post	pc	195	3283		
2091	Caracas post	pc	195	3283		
2092	Caracas post	pc	195	3283		
2093	Caracas post	pc	195	3283		
2094	Caracas post	pc	195	3283		
2095	Caracas post	pc	195	3283		
2096	Caracas post	pc	195	3283		
2097	Caracas post	pc	195	3283		
2098	Caracas post	pc	195	3283		
2099	Caracas post	pc	195	3283		
2100	Caracas post	pc	195	3283		
2101	Caracas post	pc	195	3283		
2102	Caracas post	pc	195	3283		
2103	Caracas post	pc	195	3283		
2104	Caracas post	pc	195	3283		
2105	Caracas post	pc	195	3283		
2106	Caracas post	pc	195	3283		
2107	Caracas post	pc	195	3283		
2108	Caracas post	pc	195	3283		
2109	Caracas post	pc	195	3283		
2110	Caracas post	pc	195	3283		
2111	Caracas post	pc	195	3283		
2112	Caracas post	pc	195	3283		
2113	Caracas post	pc	195	3283		
2114	Caracas post	pc	195	3283		
2115	Caracas post	pc	195	3283		
2116	Caracas post	pc	195	3283		
2117	Caracas post	pc	195	3283		
2118	Caracas post	pc	195	3283		
2119	Caracas post	pc	195	3283		
2120	Caracas post	pc	195	3283		
2121	Caracas post	pc	195	3283		
2122	Caracas post	pc	195	3283		
2123	Caracas post	pc	195	3283		
2124	Caracas post	pc	195	3283		





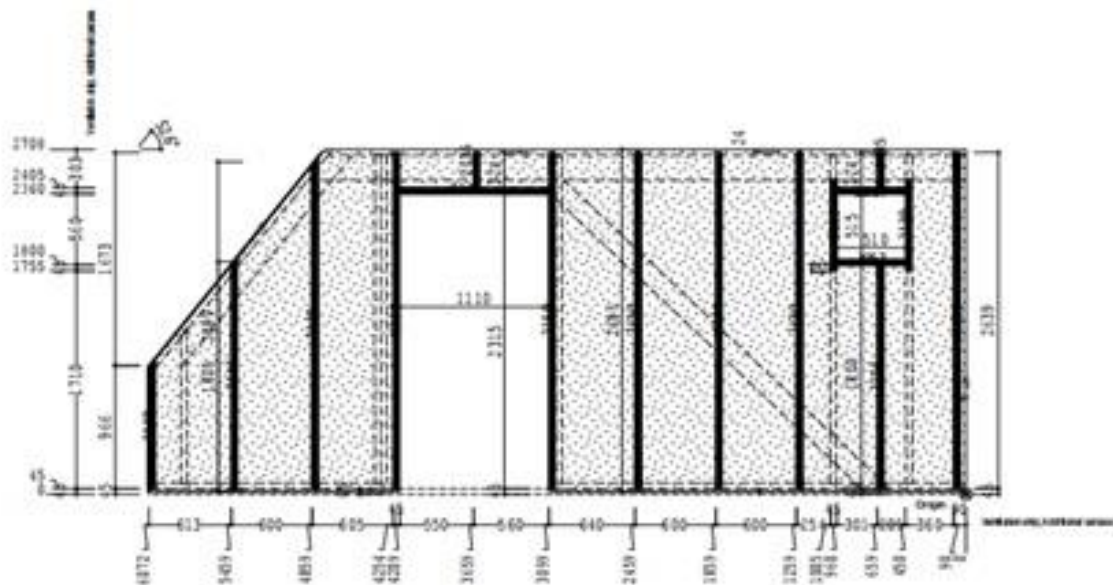
No. pr	Nimi	Laius	Kõrgus	Pikkus	Kogus	R.R.
2048	Add. carcas 45x60mm	45	45	198		
2049	Add. carcas 45x60mm bar.	45	45	520		
2050	Add. carcas 45x60mm	45	45	795		60
2051	Add. carcas 45x60mm bar.	45	45	1220		
2052	Add. carcas 45x60mm	45	45	1276		60
2053	Add. carcas 45x60mm	45	45	1705		
2054	Add. carcas 45x60mm	45	45	2001		60
2055	Add. carcas 45x60mm bar.	45	45	2327		94
2056	Add. carcas 45x60mm	45	45	2513		
2058	Add. carcas 45x60mm bar.	45	95	1393		
2059	Add. carcas 45x60mm bar.	45	95	3170		100
2060	Add. carcas 45x60mm bar.	45	95	4530		
2061	Background	45	120	2513		
2062	Background	45	145	2703		20

Kinnitus:	Project: Kõljõgi
Standard lahendus	Project: 007
Standard lahendus	Sheet: EW-18
Standard lahendus	Scale: 01.01.2024
Standard lahendus	20m² Visions
VAADE SEEST	



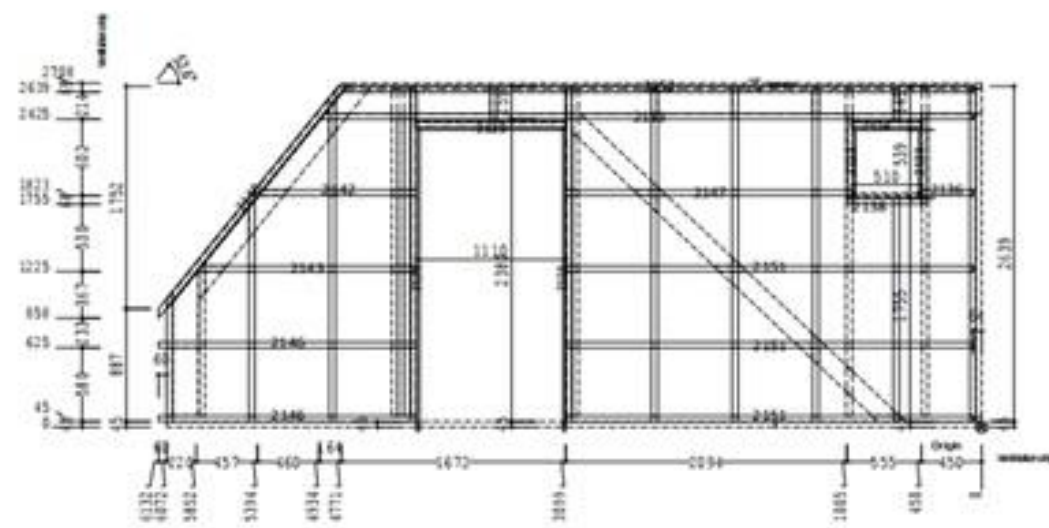
No. pr	Nimi	Laius	Kõrgus	Pikkus	Kogus	R.R.
2097	Wetstop gypsum board, 9mm	204	9	974	1	
2098	Wetstop gypsum board, 9mm	204	9	2123	1	
2099	Wetstop gypsum board, 9mm	600	9	2597	1	2110
2100	Wetstop gypsum board, 9mm	600	9	3696	1	1528
2101	Wetstop gypsum board, 9mm	630	9	1305	1	2177
2102	Wetstop gypsum board, 9mm	637	9	2696	1	896
2103	Wetstop gypsum board, 9mm	1200	9	2696	1	11437
2104	Wetstop gypsum board, 9mm	1200	9	2696	1	11437
2104	Wetstop gypsum board, 9mm	1200	9	2696	1	11437

Kinnitus:	Project: Kõljõgi
Standard lahendus	Project: 007
Standard lahendus	Sheet: EW-18
Standard lahendus	Scale: 01.01.2024
Standard lahendus	20m² Visions
VAADE VÄLJAST	



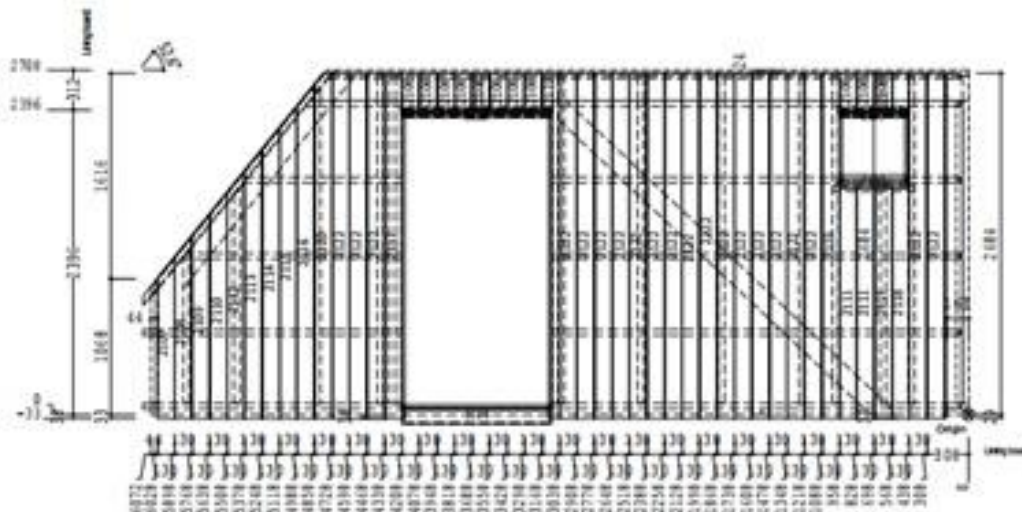
No. gr	Nimi	Laius	Kõrgus	Rõhkus	Kogus	R-R
2057	SP-01	45	95	530	1	605
2125	Vert. vnt. lattem 28x45mm	28	45	279	2	
2137	Hor. vnt. lattem 28x45mm	28	45	530	1	
2139	Vert. vnt. lattem 28x45mm	28	45	715	2	
2140	Hor. vnt. lattem 28x45mm	28	45	1025	1	37
2141	Hor. vnt. lattem 28x45mm	28	45	1130	1	
2144	Vert. vnt. lattem 28x45mm	28	45	1755	1	
2145	Vert. vnt. lattem 28x45mm	28	45	1826	1	37
2149	Vert. vnt. lattem 28x45mm	28	45	2611	1	37
2150	Vert. vnt. lattem 28x45mm	28	45	2639	6	17

Kinnitus:	Project: Kõigipõlv
Standard lahendus/	Project: 007
Standard lahendus//	Sheet: EW-18
Standard lahendus///	Issue: 01.01.2024
Standard lahendus////	
VAADE VÄLJAST	20m² Visions



No. gr	Nimi	Laius	Kõrgus	Rõhkus	Kogus	R-R
2123	Vert. cheek	21	95	508	2	26
2124	Upper cheek	21	95	530	1	
2125	Upper cheek	21	95	1066	1	
2126	vert. cheek	21	95	2393	2	
2136	Hor. lattem 28x45mm	28	45	386	1	
2138	Hor. lattem 28x45mm	28	45	600	1	
2142	Hor. lattem 28x45mm	28	45	1285	1	22
2143	Hor. lattem 28x45mm	28	45	1643	1	22
2146	Hor. lattem 28x45mm	28	45	1823	2	
2147	Hor. lattem 28x45mm	28	45	2139	1	
2148	Hor. lattem 28x45mm	28	45	2298	1	59
2151	Hor. lattem 28x45mm	28	45	3035	3	
2152	Hor. lattem 28x45mm	28	45	4707	1	21
2153	Hor. lattem 28x45mm	28	45	4870	1	21

Kinnitus:	Project: Kõigipõlv
Standard lahendus/	Project: 007
Standard lahendus//	Sheet: EW-18
Standard lahendus///	Issue: 01.01.2024
Standard lahendus////	
VAADE VÄLJAST	20m² Visions



No. pr	Nimi	Leht	Kõrgus	Pikkus	Kogus	R-R
2106	Ext. dedling 23x045 UVS	23	145	288	11	121
2107	Ext. dedling 23x045 UVS	23	145	1291	1	850
2108	Ext. dedling 23x045 UVS	23	145	1461	1	850
2109	Ext. dedling 23x045 UVS	23	145	1621	1	934
2110	Ext. dedling 23x045 UVS	23	145	1801	1	1000
2111	Ext. dedling 23x045 UVS	23	145	1833	3	723
2112	Ext. dedling 23x045 UVS	23	145	1871	1	1067
2113	Ext. dedling 23x045 UVS	23	145	2141	1	1133
2114	Ext. dedling 23x045 UVS	23	145	2311	1	1299
2115	Ext. dedling 23x045 UVS	23	145	2481	1	1265
2116	Ext. dedling 23x045 UVS	23	145	2651	1	1331
2117	Ext. dedling 23x045 UVS	23	145	2717	20	1345
2117	Ext. dedling 23x045 UVS	23	145	2717	1	1345
2120	Ext. dedling 23x045 UVS	23	145	2717	1	1345
2121	Ext. dedling 23x045 UVS	23	145	2717	1	1345
2122	Ext. dedling 23x045 UVS	23	145	2717	1	1345
2123	Ext. dedling 23x045 UVS	23	145	2717	1	1345
2127	P2	30	100	530	1	1465
2128	P2	30	100	1110	1	3190
2129	P2	25	158	1110	1	5854
2130	P1	42	158	530	1	3178

Kinnitus:	Projekt: Kõikjärv
Standard lahendus/	Projekt nr.: 007
Standard lahendus//	Stroom: EW-18
Standard lahendus///	Revisioon: 01.01.2024
Standard lahendus////	20m² Visions
VAADE VÄLJAST	